

New Venue This Season – Buggy Beach, Elizabeth City NC



Directions to Buggy Beach

(Spectator Entrance)

- Travel South on US-17
- Continue onto Bypass US-17 S toward Hertford, Edenton
- Take exit 258 onto Halstead Blvd Ext [NC-344]
- Turn left onto Halstead Blvd toward Elizabeth City
- Drive 8.6mi [past the Coast Guard base] and turn left onto Consolidated Road; there is an Eagle Mart at the corner.
- In 1.1mi turn right onto Bayside Road
- Quick left onto Davis Bay Road
- Continue straight into Newbegun Land neighborhood.
- Go about 2mi, turn right on Airship Drive
- Follow PAST the Red Barn (and donkeys) and take a left towards Buggy Beach (down the gravel road).
- Using GPS, the closest address to the venue is 809 Airship Drive

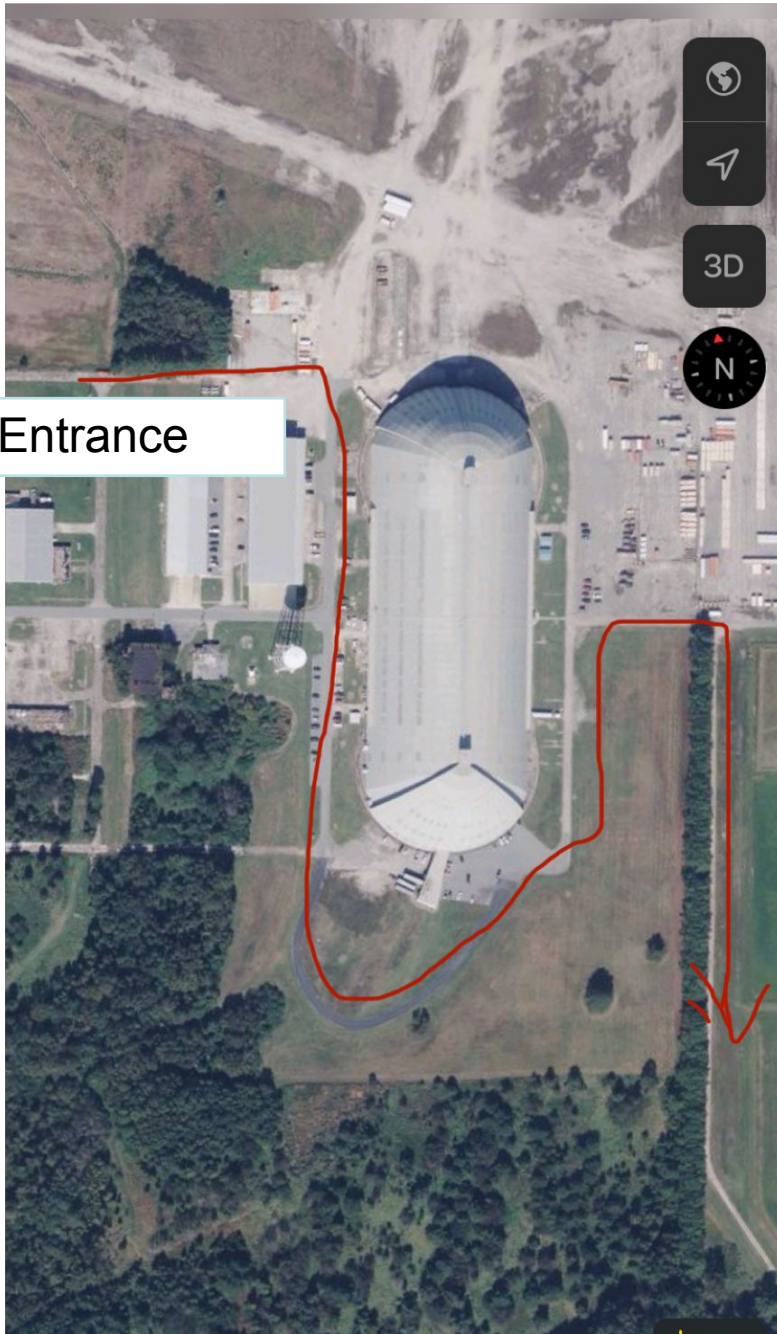
Directions to Buggy Beach

Trailer Entrance

- Travel South on US-17
- Continue onto Bypass US-17 S toward Hertford, Edenton
- Take exit 258 onto Halstead Blvd Ext [NC-344]
- Turn left onto Halstead Blvd toward Elizabeth City

For easier access to the venue, the blimp hangar gate will be open to trailers:

- Drive past the Coast Guard base and Consolidated Road (there is an Eagle Mart at the corner) and turn left on Toxey Road (@9 miles). This road takes you straight to the blimp hanger. Signs will be posted directing you to the gate to access the venue.
- Once you've gone through the gate, turn right towards Buggy Beach – down the gravel road.
- Using GPS, 182 T Com drive.



Trailer Entrance

Go through the gate and turn right onto the gravel road – To Buggy Beach



General Parking

General Parking:

- Parking will open at 6:30 AM on regatta day (earlier access for EVSRA volunteers).
- Parking fee is \$10/vehicle. Cash is preferred; credit cards are accepted. Parking fees collected by Elizabeth City RC to help fund the growth of rowing in Northeastern NC.

Referees:

- Park in the reserved area for Referees.
- No parking fee for referees.

Buses:

- Park, unload and re-load all crew members in the reserved area for buses.
- No parking fee for buses transporting team members.

Handicap Parking:

- Designated handicapped parking spots are located in the parking area. No paved walk-ways or other areas.

Trailer Parking

- **Boat and Food Trailers**

- Arrivals on Saturday morning:
 - Must arrive no later than 7:45 AM. If a trailer is late due to unforeseen circumstances, contact Joel Stewart at 757.655.3535.
 - One tow vehicle per program in the Regatta area. Tow vehicle will need to be unhitched from the trailer and parked in the designated area.
 - Food trailers will have a designated parking area on the regatta grounds. Food trailers can drop off items near the Team Tents up until 7:45 AM and then park in the designated area.
- Arrangements can be made to drop off boat and food trailers Friday late afternoon /early evening evening between the hours of 4:30 PM and 6:00 PM. Contact Joel Stewart at 757.655.3535.

Grounds

- Parking is only permitted in designated parking areas.
- Race Viewing Area: Spectator viewing is along the waterfront. Keep tents/tables at least 45 feet away from the waterfront. Follow pre-marked boundary line for tents. Be mindful of other teams when setting up your tent. All teams share the designated Team Tent space.
- For safety, spectators are not allowed near the docks – both launch and recovery docks and the Launchmaster dock. This area will be roped off with access points for coaches, rowers and designated volunteers helping the Team. Follow the signs to reach your Team's tent.

Grounds

- Grills: Propane grills are allowed at the Team tents. Charcoal grills are not allowed.
- Generators: Generators are allowed but please be respectful of team tents that are near-by. If a generator is needed, a lower horse-power, quiet model is preferred.
- Trash Removal: Teams are responsible for the removal/carry out of their own trash at the end of the regatta.
- If the weather is warm, bug spray is recommended to repel mosquitos and ticks.
- Elizabeth City RC will be selling grilled bratwurst, sausages, hot dogs, smoothies, and baked goods. Proceeds will go toward helping to fund the growth of rowing in Northeastern NC.

Grounds

- Dogs are allowed under the following guidelines:
 - Dogs must be under complete and immediate control of owners and on a leash no longer than 8 feet.
 - Dogs are not allowed near kids carrying boats either to the launch area, recovery area or back to their boat trailer.
 - Dogs are NOT allowed in the launch and recovery areas.
 - Owners must pick up and dispose of all dog waste.
 - Dogs must be kept at a distance from donkeys and horses on the property.

If these guidelines are not followed, or if any complaints are received from regatta attendees, you will be asked to remove your dog from the regatta site.

EVSRA Safety Coverage

- Every regatta has at least one Safety Officer on site who is connected to all referees/regatta managers by radio.
- A first aid kit is kept on site at the Regatta Office.
- A sign-in sheet for medically certified personnel is maintained at the Regatta Office.
- There are two boats on the water designated as safety boats for recovery of rowers, equipped with additional rescue equipment.
- Coaches are responsible for maintaining up-to-date documentation on any rowers on their team who require an epi-pen, asthma inhaler, or have other significant health issues. Coaches are also responsible to remind rowers to keep their devices with them at all times – both on and off the water.